

Simply advanced

The EVOS SMALL Plating System takes an evolutionary approach to **simplifying** and **unifying** small fragment plating systems.

www.EVOSSmall.com

 **smith&nephew**
EVOS[®] SMALL
Plating System



Supporting healthcare professionals



Trauma surgery is challenging and ever-changing.

You require the ability to adapt in the OR.
Does your implant system give you the flexibility you need?

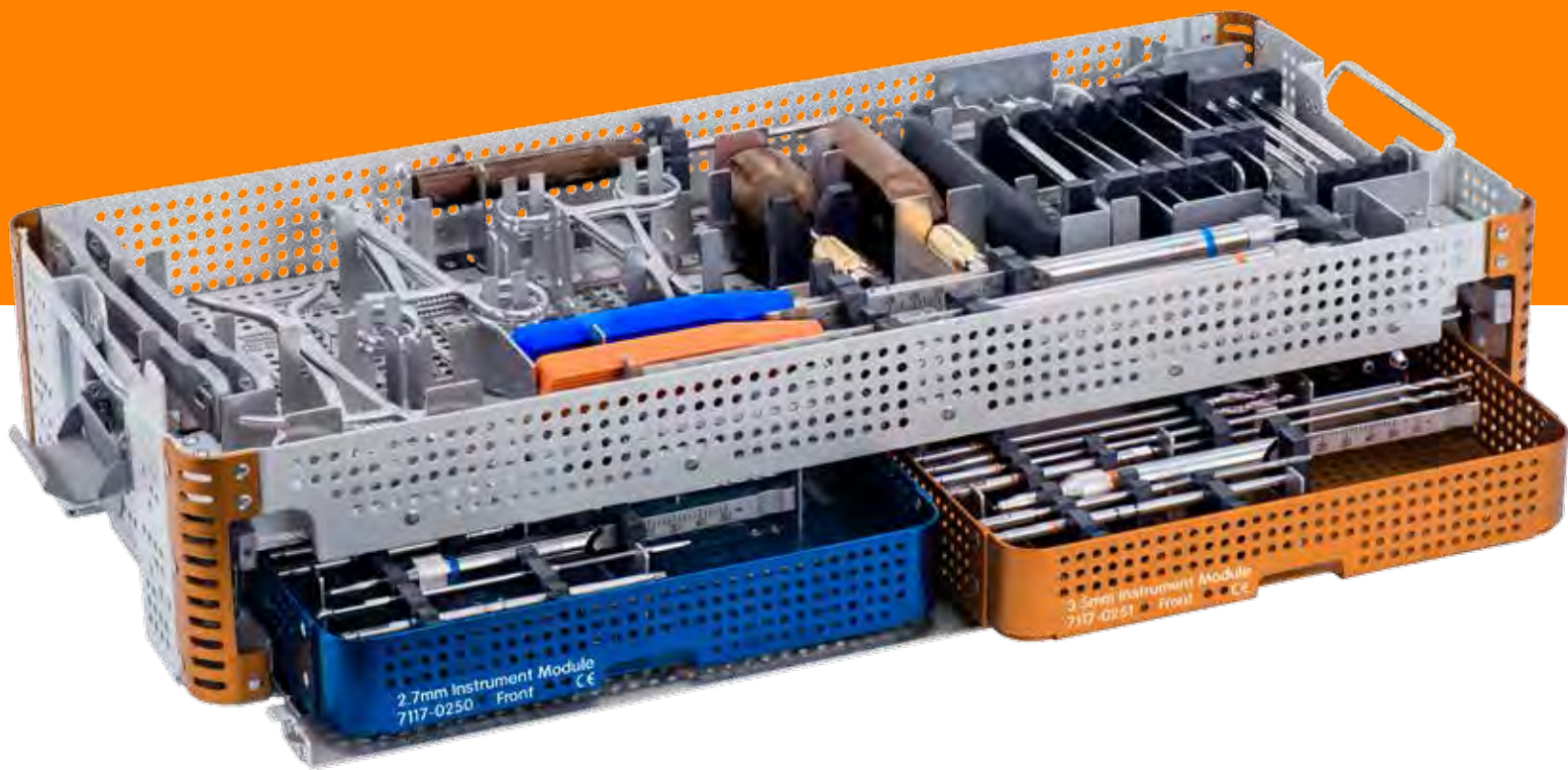
Are you facing challenges like:

Incomplete implant systems

Limited compatibility

Outdated technology

The EVOS[◇] SMALL Plating System has evolved with your skillset to meet the demands and expectations of trauma surgery.



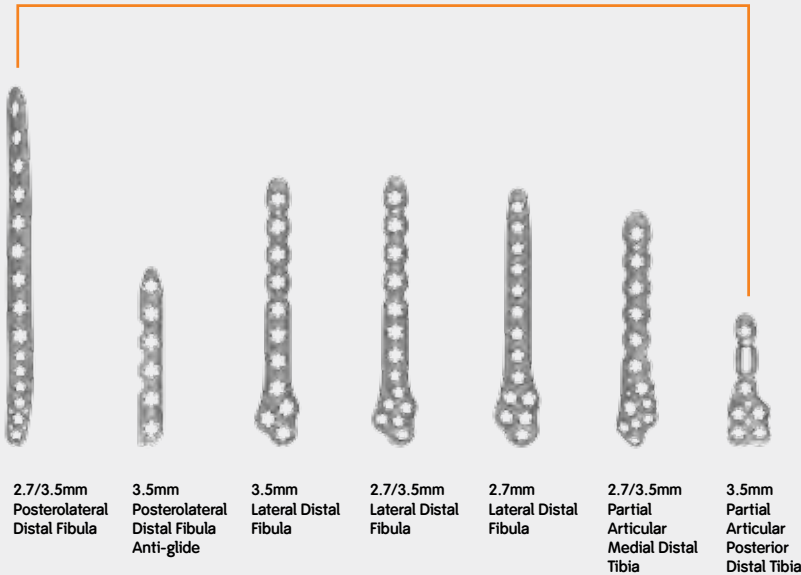
The EVOS[◇] SMALL Plating System takes an evolutionary approach to **simplifying** and **unifying** small fragment plating systems.

Plates and screws are designed to give you **stability** where you need it and **flexibility** where you want it.

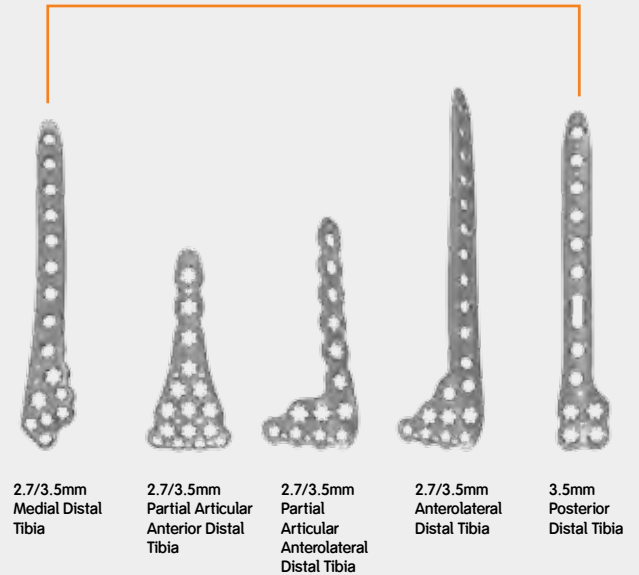
All inclusive, expansive plating system

The EVOS[®] SMALL lower extremity implant portfolio thoughtfully considers every fracture need. **Locking, Non-Locking and Variable Angle Locking Plates** are offered to address fixation needs in simple to complex fractures.

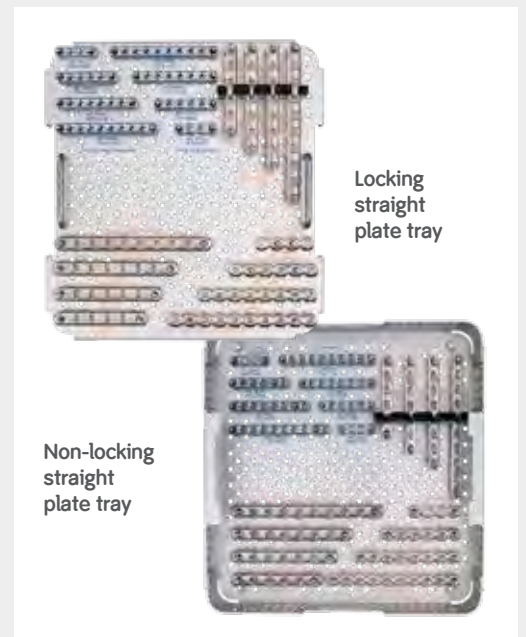
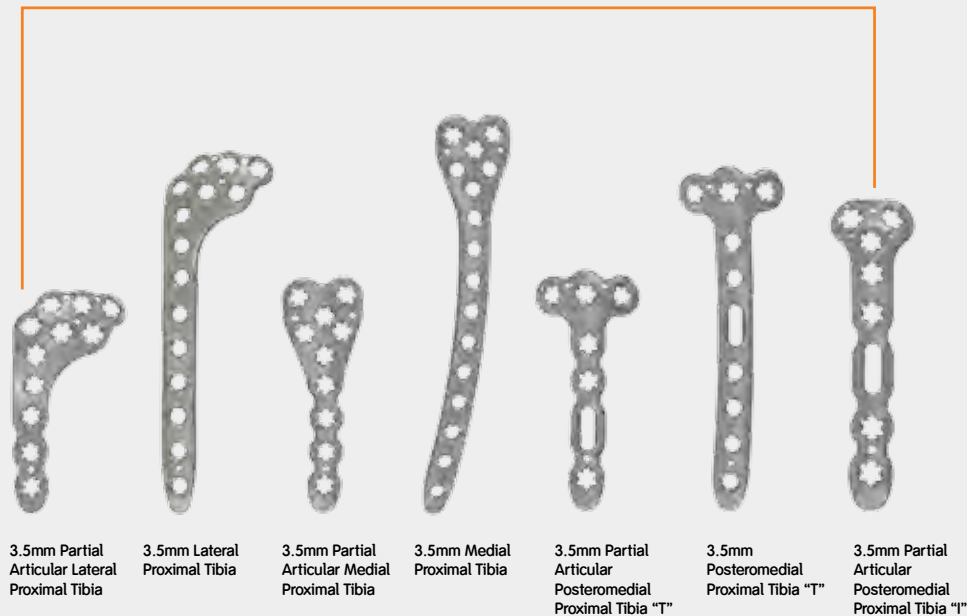
Ankle



Pilon

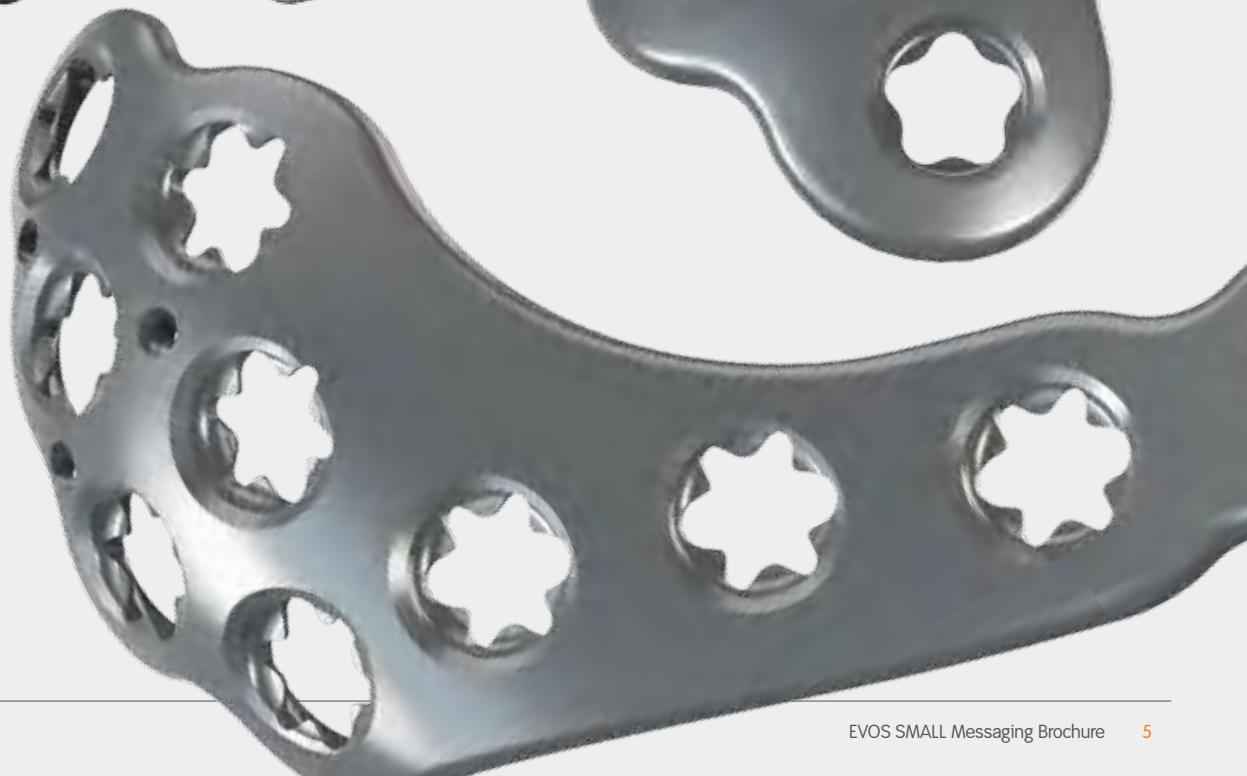


Proximal Tibia



Low-profile constructs

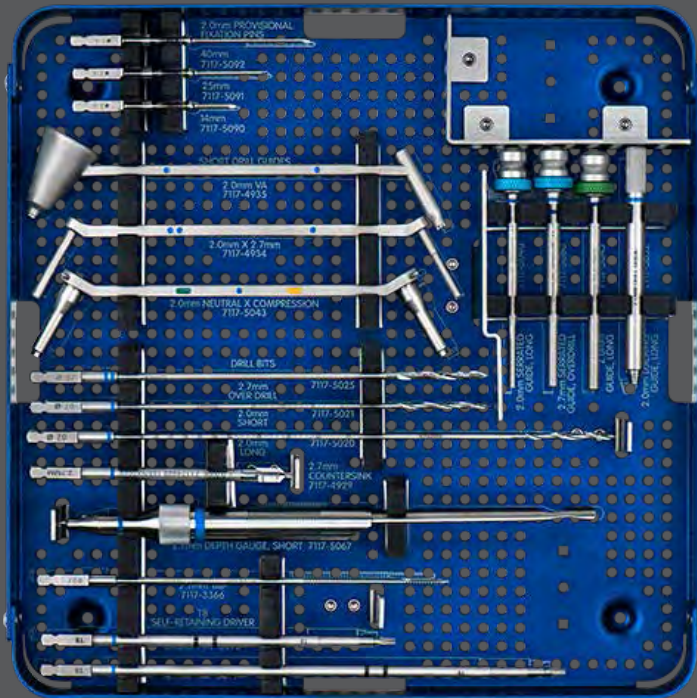
Plates and screws are designed to ensure an overall low-profile construct whether screws are placed on or off-axis.



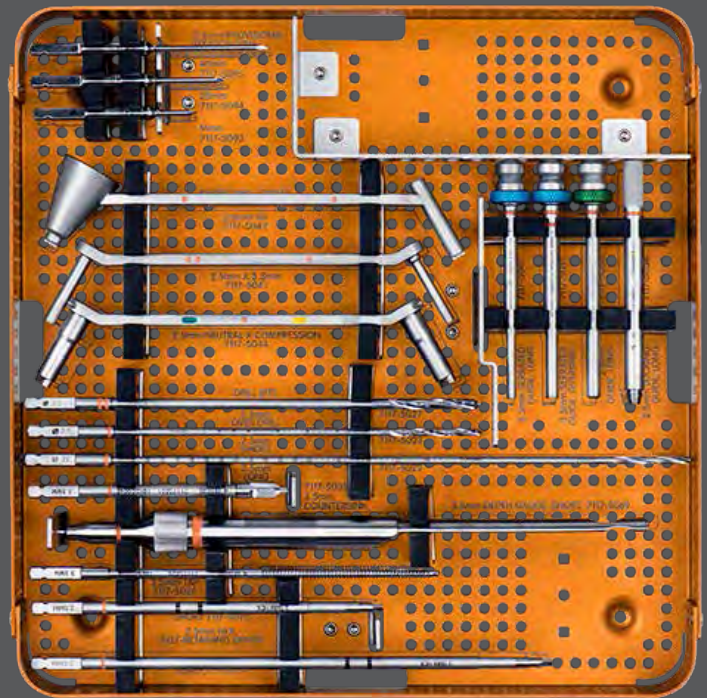
Simplified Integrated solutions for fracture fixation

The EVOS[®] SMALL Plating System offers surgeons the simplicity of one, comprehensive plating system that addresses all of their small fragment surgical needs.

Logically organized instrumentation



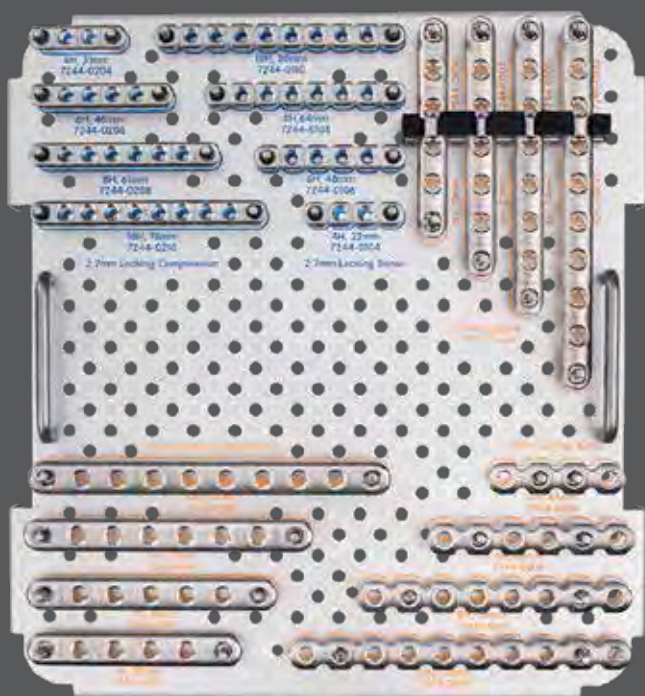
2.7mm Instrument Tray



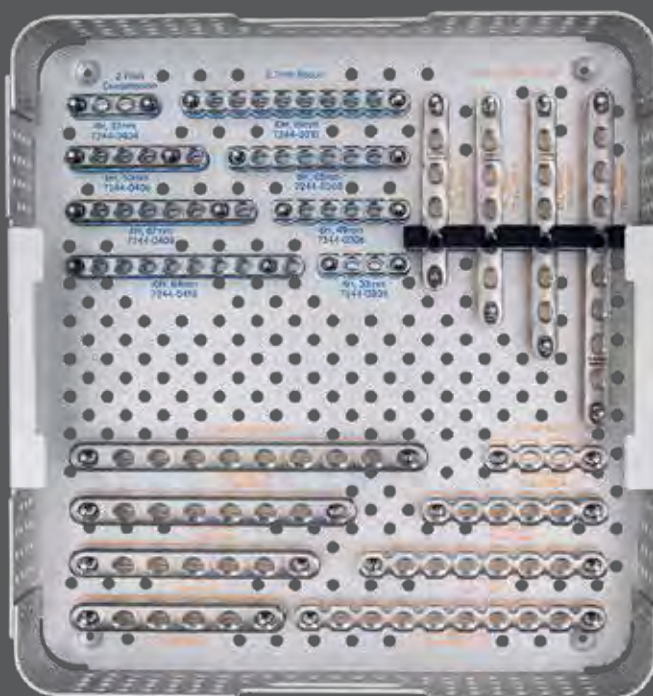
3.5mm Instrument Tray



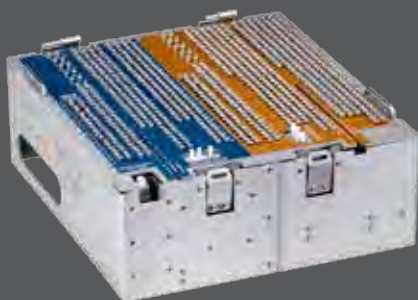
Color coding of instruments and trays to match plate and screw fixation options



2.7mm/3.5mm Locking Straight Plate Tray

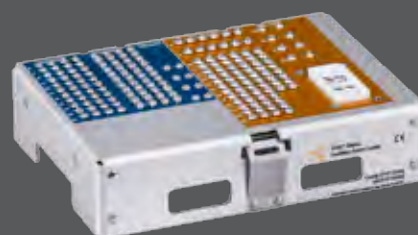


2.7mm/3.5mm Non-locking Straight Plate Tray



Screw Caddy

- 2.7mm Cortex Screws (10-80mm)
- 2.7mm Locking Screws (10-80mm)
- 4.0mm Osteopenia Screws FT (10-80mm)
- 4.0mm Osteopenia Screws PT (26-80mm)
- 3.5mm Cortex Screws (10-90mm)
- 3.5mm Locking Screws (10-90mm)
- 4.7mm Osteopenia Screws FT (10-90mm)
- 4.7mm Osteopenia Screws PT (26-90mm)



Auxiliary Screw Caddy

- 2.7mm Cortex Screws (6-16mm)
- 2.7mm Locking Screws (6-16mm)
- 4.0mm Osteopenia Screws FT (10-16mm)
- 3.5mm Cortex Screws (6-22mm)
- 4.7mm Osteopenia Screws (10-16mm)

One locking screw

One screw for **threaded locking** and **variable-angle locking**.

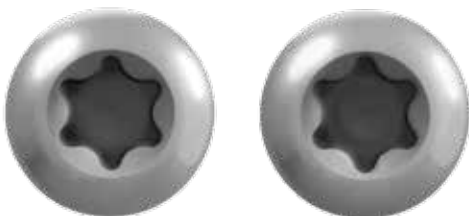
2.7mm		4.0mm		3.5mm		4.7mm	
							
Cortex	Locking	Fully Threaded Osteopenia	Partially Threaded Osteopenia	Cortex	Locking	Fully Threaded Osteopenia	Partially Threaded Osteopenia

Variable-angle locking technology



One drill bit One driver

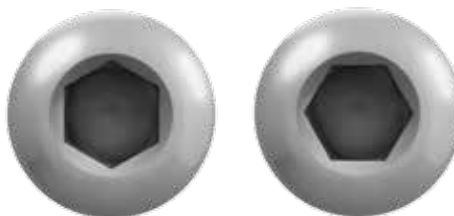
2.0mm Drill
T8 Driver



2.7mm Screws

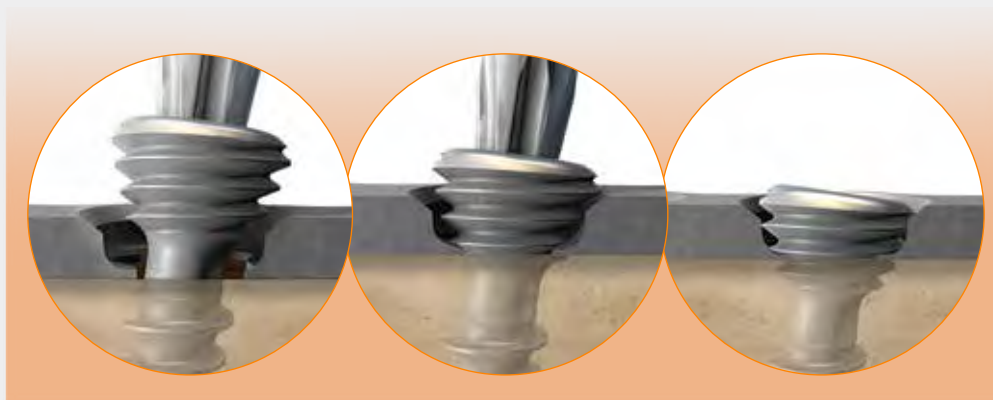
4.0mm Screws

2.5mm Drill
2.5mm Hex Driver



3.5mm Screws

4.7mm Screws



Advanced technology

Evolutionary approach to plate and screw designs

The EVOS[®] SMALL Plating System offers surgeons stability where they want it and flexibility when they need it.

Fracture specific options

OTA Type B Fractures

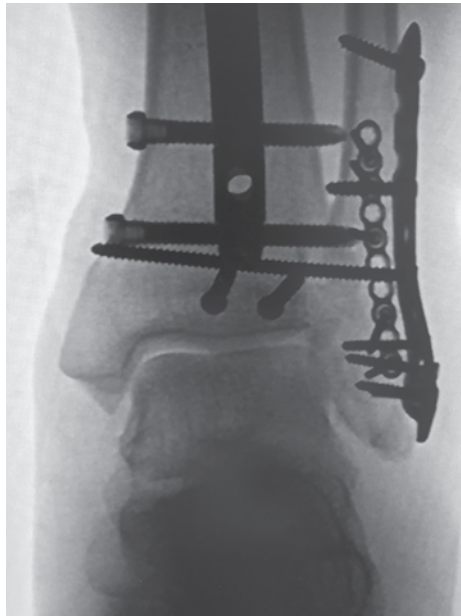
Low profile plates for buttressing partial articular fractures

Variable angle options throughout the plate

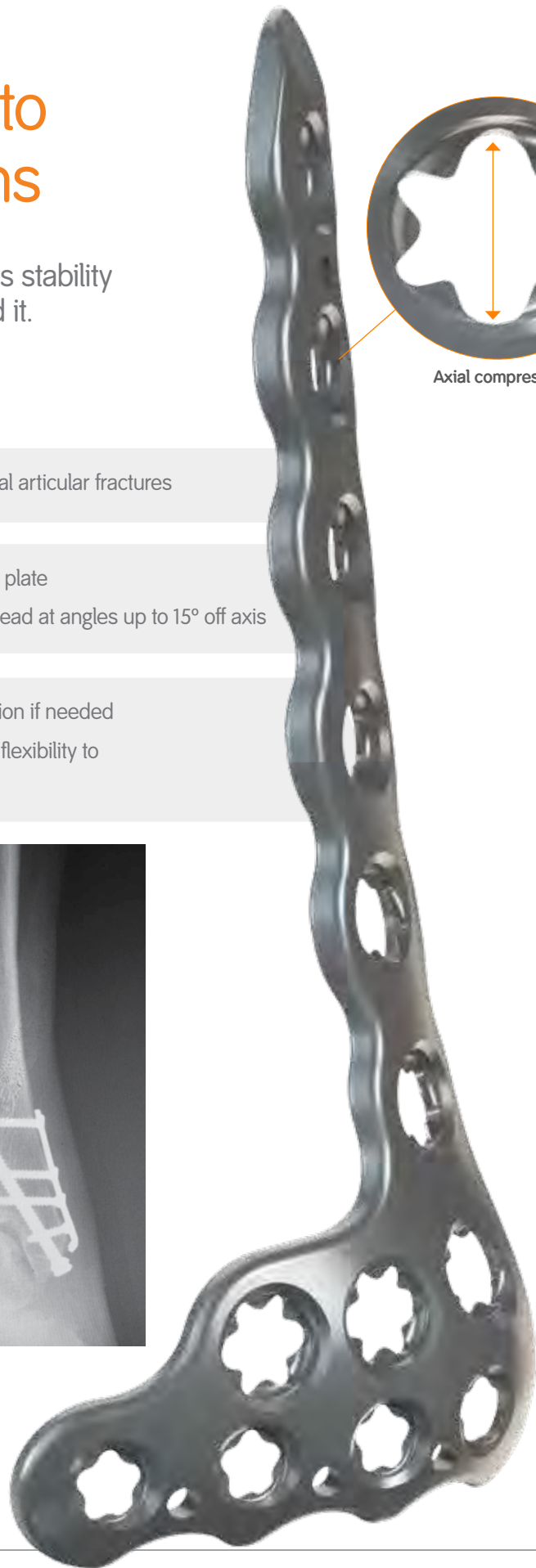
- Six tabs engage the locking screw head at angles up to 15° off axis

Middle slot allows for axial compression if needed

- Recesses in the shaft for enhanced flexibility to compress plate to bone



Axial compression





OTA Type A and C Fractures



Low profile in the metaphyseal region where soft tissue coverage can be minimal

Variable angle holes in the metaphyseal region of the plate to enable freedom of plate and screw placement

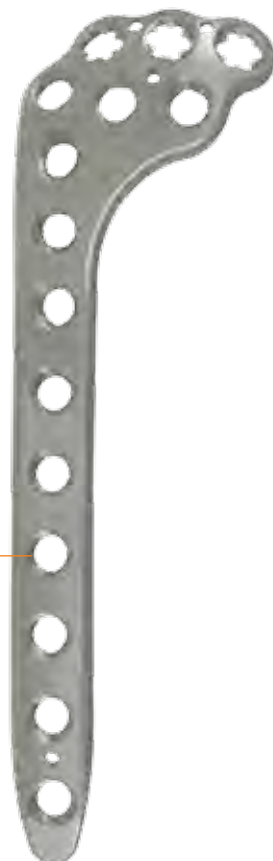
Reinforced plate shaft and threaded locking technology provide enhanced stability

Locking hole allows for axial compression if needed

Multiple metaphyseal fixation options allow for accurate rebuilding and structural support of the articular surface. Small points of fixation allow for fixation in close proximity of the joint to aid in maintaining joint reduction.



Axial compression



Smith & Nephew, Inc.

1450 Brooks Road
Memphis, TN 38116
USA

Telephone: 1-901-396-2121

Information: 1-800-821-5700

Orders/Inquiries: 1-800-238-7538

www.smith-nephew.com

°Trademark of Smith & Nephew

©2017 Smith & Nephew

09613 VI 09/17

Supporting healthcare professionals for over 150 years
